

Maintenance Free Fresh Air Ventilation.

Power-Flo™ Ceiling Inlets

The Fresh Air Ceiling Inlet System from VAL-CO™ is the heart of a total ventilation system. Our superior design is cost effective, durable and easy to install and clean.

Design Features

- Operated by a power actuator and regulated by your ventilation control program
- Controls air velocity and volume according to fan speed(s) and temperature for optimum animal comfort
- Unique “Biflo” design allows draft-free air distribution throughout the confinement area
- Reduced fan operation results in added cost savings due to precise, fast and gentle air replacement
- Unique design eliminates heat loss and back drafts

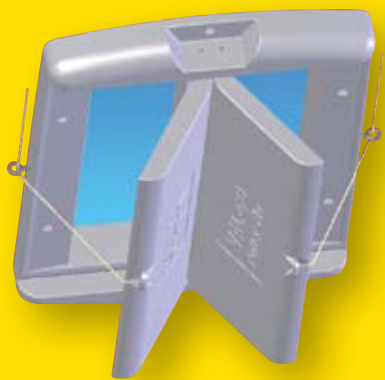
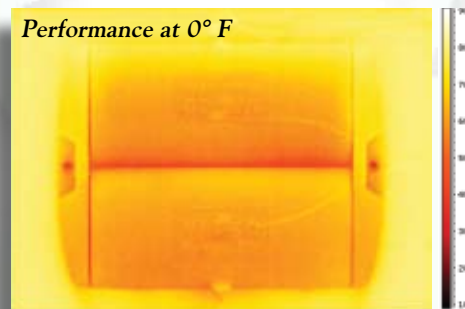
Construction

- Rugged seamless rotationally molded construction meets or exceeds the performance of foam inlets
- Made of tough, non-corrosive polyethylene
- Available in 1400 or 2700 cfm sizes to fit your design needs
- Stands up to high pressure cleaning
- Complete with control cords, hardware and insulstop

Thermal Tested

- The Power-Flo™ Ceiling Inlets demonstrated superior results when tested in a certified laboratory under controlled and monitored conditions over a 60° temperature gradient of -30° F through +30° F.

Performance at 0° F



Specifications

Model	CFM	Rough Opening
1406P	1400	16 7/16" x 23 3/16"
1410P	2700	21 7/16" x 32 15/16"



North America:
Phone: 800.99VALCO (800.998.2526)
Fax: 419.678.2200
E-mail: sales@valcompanies.com

International:
Phone: 717.354.4586
Fax: 717.735.1800
E-mail: intl.sales@valcompanies.com