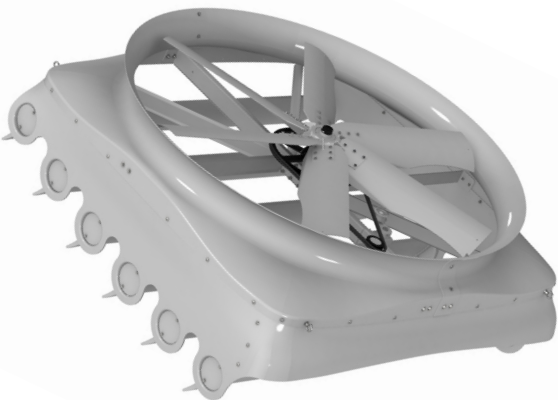




The Artex Storm Fans create the extreme velocity needed to cool cows, control insects, dry bedding and ensure the comfort of cows and staff. Designed with versatility in mind, Storm fans have adjustable louvers that allow farmers to easily direct air over and under cows.



Our Most Powerful Circulation Fan, a single 72" storm fan can easily replace four single speed panel fans or eight 36" basket fans.

Optional Variable Frequency Drives (VFDs) increase energy savings by controlling the speed of the motor, and eliminating the initial power surge when turning the motor on and off. Allowing for the automatic adjustment of fan speed based on temperature thresholds set on the environmental controller. Artex VFDs enable you to better control the environment of your barn and reduce energy costs through automation.

Artex Storm Fan Features



- Quick change belt
- Quiet operation on all speeds
- Corrosion-resistant fiberglass housing
- Heavy-duty pulley and bearing system
- 6 balanced, heavy-duty aluminum blades
- Optional variable frequency drive
- Variety of mounting options such as:
 - Steel post
 - Building column
 - Ceiling suspension

Warranties

- 5 year warranty on blades
- 1 year limited warranty on all parts



High Performance & Innovative Design

- Adjustable airfoil deflectors optimize air throw distance and direction
- 72" Storm Fan creates an area of 6m (19.69') wide x 18m (59') long with a minimum air flow of 150m per min (500' per min)
- 55" Storm Fan creates an area of 3m (9.84') wide x 10m (32.8') long with a minimum airflow of 150m per min (500' per minute)

Performance Data

Model	Description	Size	Thrust (lbf)	Input Power (Kw)	Thrust Efficiency Ratio (lbf/CFM)	Airflow (Thrust CFM)	CFM/Watt	Test
93018	Standard Performance	55"	28.36	1.337	21.21	27,093	20.3	*
90801	Standard Performance	72"	48.30	1.992	24.25	46,877	23.53	33418-A2**

* In-house lab tested, pending independent testing to confirm results **Independent lab test according to AMCA 230-12
As updated lab results are made available we will continue to update the information stated above.